



Anchored In Excellence

Learning together
Building together
Strengthening together

PROSPECTUS

A Unit of METAS Group of Institutions

METAS ADVENTIST COLLEGE

Bariatu Road, Ranchi - 834009, Jharkhand





Mission Statement

To touch the lives and to transform people by teaching, by healing and by creating a better community for man and God.

Vision Statement

To become a dynamic global institution and a centre for excellence

Core Values

- ★ Compassionate in all dealings
- ★ Loyal to organizational Goals
- ★ Hard Work with passion and productivity
- ★ Continuous self-renewal
- ★ Honesty and integrity in all aspects



METAS ADVENTIST COLLEGE

Affiliated to Ranchi University/MIBE-CMAI & Recognised by Indian Nursing Council/JNRC



President's Message

I'm glad to welcome you to METAS Adventist College with a tradition of excellence. I dare to declare proudly that our college stands tall in the Capital and hence became the number one choice for every student desiring to pursue Nursing. Our strength lies in the dedication of our honest faculty who are professionals in their field. Their commitment extends beyond the classroom, making their gracious presence and services more accessible beyond the college hours.

Since our fame spread like wildfire, our students are getting job offers even before the completion of their studies. Number of hospitals that absorbed our graduates constantly report praises of their outstanding performance in the clinical as we train them to be amicable. On the other hand, the rejected students at the time of admission wouldn't mind waiting for another year just to get a place in our college.

In tune with the concept of true education which is the harmonious development of the physical, mental and spiritual powers to prepare for the joy of service in this world and for the higher joy of wider service

to come, our college endeavors in engaging your child in co-curricular and extracurricular activities that compliment the curriculum. We stand unique in sending charged graduates seasoned to handle odds in life. We are next to none in giving the highest clinical exposure. Beside postings in the mother hospitals, we have established tie up with all Multi Specialty hospitals for perfect clinical training, making our graduates the First Choice.

Besides attending to the academics, the administration, staff and faculty with assistance of chaplaincy, cater to the emotions of every student relieving them of all stresses of life and shielding them from depression. Having no traces of ragging, we create a very serene atmosphere conducive to learning and training.

Dear parent/ child I firmly assure you that you made the best choice and you'll never regret. I extend a very hearty welcome to METAS family here at Ranchi.

Dr. Srikakolli Eliah

President & CEO,

METAS Group of Institutions, India



METAS ADVENTIST COLLEGE

Affiliated to Ranchi University/MIBE-CMAI & Recognised by Indian Nursing Council/JNRC



*Learning together,
Building together,
Strengthening together*

Academic excellence has become a way of life with all of us at METAS Adventist College & School of Nursing, Ranchi, in line with our tradition of introducing high quality, career oriented programmes. As its Executive Vice-President I am entrusted with the responsibility of building up this Institution into a Full-fledged Institution fulfilling the needs, demands and aspiration of students who are desirous of making a career out of Nursing. The College of Nursing at Ranchi is one of the three Nursing Colleges that are run by the METAS of Seventh day Adventist Trust.

The College of Nursing enjoys state of the art facilities in class rooms, laboratories and other infrastructure in a newly built learning complex. Backed by the METAS experience of conducting programmes in the health care field, fortified by qualified faculty, state

of the art laboratories with latest equipment and a 200 bed Multi-Speciality Hospital on the campus for practical on the job training. The College of Nursing provides unmatched facilities for producing Nursing professionals of the highest calibre. It is our aim to deliver quality and cost effective Nursing and Midwifery Education to the students with the aim of promoting professional growth and contributing to the health of the people of Ranchi in particular and to the nation in general. With these opportunities, we pledge, we will continue to deliver the kind of quality education that not only fully equips students for future challenges, but also brings out whatever is the best in each individual. We sincerely believe in making a difference in our students.

C. Murmu
Executive Vice President



METAS ADVENTIST COLLEGE

Affiliated to Ranchi University/MIBE-CMAI & Recognised by Indian Nursing Council/JNRC



Transform

Educate

Empower

It is with profound feelings of honor, humility, privilege/ and joy that I stand before you today. On this day of celebration I experience a deep and compelling sense of commitment/ obligation, and stewardship. The mission of our college will be to enable and empower all students to reach high levels of achievement and to acquire the knowledge, skills and the values that they will need to become responsible and successful members in the competitive global economy. Imagine thousands of such empowered people in Ranchi. Imagine a Ranchi wherein our youth are in communion with a shared sense of dignity, dreams, purpose and vision: a Ranchi that can be creative, confident, and driven by strong Adventist values. METAS of Seventh-day Adventists will not rest until the last young child here is educated, enabled and empowered. The college will offer programs of worth and quality. They are

designed to give the students the skills, insights and experience essential to meet the growing professional needs of the rapidly expanding and changing world and I look forward to welcoming your children into the institution.

METAS Adventist College & School of Nursing is committed to educate a new generation of leaders for a new Ranchi men and women who will be capable of reshaping and reconstructing Ranchi with vision, integrity, and competence. METAS Adventist College purports to being a beacon of hope and light for all. Let us dream of a Ranchi where every person living here feels proud; where every single person can make a difference. Let us imagine that our children and grandchildren wake up in such a land as ours. Such a dream is indeed worth living. I invite you to join us, as a prospective student, parent, or simply as a friend.

S.D.D. Naidu

General Vice President



METAS ADVENTIST COLLEGE

Affiliated to Ranchi University/MIBE-CMAI & Recognised by Indian Nursing Council/JNRC



METAS is the vision and dream of leaders who are farsighted and perceptive

METAS Adventist College & School of Nursing is not a mere building—all concrete, iron, stone, bricks, timber and mortar. It is much more than a material and physical reality; it is the vision and dream of leaders who are farsighted and perceptive, it was created by the devotion and zeal, the self sacrifice and generosity of men and women who gave their all for the best education of the youth of the Adventist Organization. Faith, hope and love have gone into its moulding/discipline, scholarship and service are its adornments. Worldly-mindedness, self-interest, and mercenary motives do not reign within its precincts but the serene spirit and dynamic industry of men and women, filled with the ardent desire to provide the Southern Asia Division with loyal, devoted and useful citizens.

Bobby James

Associate Vice President,

Finance



METAS what it stands for

METAS is a word that means new growth. It signifies vitality, energy, power and dynamism. It is a sign of renaissance, a new beginning, a rebirth, a resurgence the rising of a new sun, the germination of a seed, a novel growth. Physically, it is an acronym that stands for “Medical Educational Trust Association of Seventh-Day Adventists”.

We have a tradition of providing an extensive and comprehensive educational program and we enjoy an excellent reputation within the local community and beyond. It is our aim to help your child to settle into our College community and build those skills, attitudes and values they will need to fully participate in the rich Academic life of our College. We endeavour to develop each child's talent and level of excellence in all Academic activities to enable them to reach their full potential. I hope all parents will accept our invitation to become a part of our College community. Our doors are open to students of all communities. Please feel free to talk with us about your child's challenges and desires. I look forward to hearing from you, seeing you and working with you in the years ahead.

Vijay Raj Bellam

Registrar



METAS ADVENTIST COLLEGE

Affiliated to Ranchi University/MIBE-CMAI & Recognised by Indian Nursing Council/JNRC



Neath its Hallowed Walls, Lie a Million Dreams and Aspirants....

It is with delight that I welcome you to the warm and friendly College community of METAS Adventist College & School of Nursing. Every parent is anxious to find a good College, one that will equip their child with the skills they will need for a sound future. METAS is, such a college. We offer exciting career opportunities with a caring and supportive environment. We have a tradition of providing an extensive and comprehensive educational program and we enjoy an excellent reputation within the local community and beyond. It is our aim to help your child to settle into our College community and build those skills, attitudes and values they will need to fully participate in the rich Academic life of our College. We endeavour to develop each child's talent and level of excellence in all Academic activities to enable them to reach their full potential. I hope all parents will accept our invitation to become a part of our College community. Our doors are open to students of all communities. Please feel free to talk with us about your child's challenges and desires. I look forward to hearing from you, seeing you and working with you in the years ahead.

Mrs. Merlin Mohan Boddeti
Principal, College of Nursing



Noblest profession requires the nobility of heart

Scribbling a pen on a piece of paper doesn't necessarily mean writing. To write something on the noblest profession requires the nobility of heart. Mother Teresa once said to her doctor, Devi Shetty, that the hands that heal are no less better than the lips that pray. I am glad to have an opportunity to write something on the noblest professionals of mankind who do not hesitate to trouble themselves to relieve the pain of others. I am proud to extend my heart-felt thanks to all who willingly opted for serving people in their most painful critical moments. May God bless Thy servants. Florence Nightingale's conviction was "I attribute my success to this - I never gave or took any excuse." I am happy to see our fellow brothers and sisters happy in making others happy.

In this journey of ours, we are to be careful of certain things. We are to tie up knowledge, skill, and character. As long as long they are separate, the humanity will suffer. At METAS, we have developed the methods and methodology to tie them up and to ensure man making and nation building. I would like to thank all for the dedication extended to enhance the benchmark higher. Let our potentials be unleashed to venture and victory. Let the goals of the Metas be achieved in serving people and transforming mankind.

Mrs. Sunita Soren
Principal, School of Nursing



METAS ADVENTIST COLLEGE

Affiliated to Ranchi University/MIBE-CMAI & Recognised by Indian Nursing Council/JNRC

INTRODUCTION:

METAS Adventist College and School of Nursing is one of the most modern and well equipped nursing colleges in Jharkhand. It is widely recognized as a center of excellence in the field of nursing. The college is affiliated to Ranchi University, Ranchi. It is recognized by the Indian Nursing Council, New Delhi & the Jharkhand Nursing Council.

The college has been established by the "Education Society" in the year 2007-2008, recognising the necessity of the neglected poor, down trodden and sick people by providing optimum health care, since its Inception METAS Adventist College of Nursing has trained students from all around the country. Today you all know the increased paramedical demand at home and outside the nation and the several challenges that are thrown open for medical care. With this ideology, the society immediately rose to the occasion to start and train nurses at collegiate level with excellent inputs.

LOCATION:

It is Situated on NH 33, 07 km from the Ranchi railway station and 08 km from Ranchi Airport. The College is easily accessible from other cities of our country.

COLLEGE CAMPUS:

College & School of Nursing is located in its own spacious Land with **creamy white building**. Games and sports are provided amply for the physical growth and to sustain mental hygiene. The college has well ventilated class rooms for nursing students. To enhance the presentation of seminars, lectures etc the institute has a good audio visual set up with LCD projectors, sound system, models and chart for the use of faculty and students.

FACULTY:

The institute has a highly qualified and experienced faculty, many of whom have been recognized for their works in national and international journals. All the staff stay in campus; students can derive the benefit of academic inputs by getting their doubts clarified from resident lecturers. Guest lectures are delivered on a regular basis by eminent scholars in their areas of expertise.

LABORATORIES :

METAS Adventist College & School of Nursing has well equipped & spacious laboratories for Fundamental of Nursing, Anatomy & Physiology, Nutrition, Community Health Nursing, Pediatric and Maternity Nursing with latest equipment like manikins, simulators etc.





METAS ADVENTIST COLLEGE

Affiliated to Ranchi University/MIBE-CMAI & Recognised by Indian Nursing Council/JNRC



LIBRARY:

There is no library in the world which can be called complete. METAS Adventist College of Nursing has 4000 Nursing books, along with both national and International journals, Internet Facilities and access to on line Library hours are made compulsory as part of the curriculum.

HOSTEL:

The College possesses a good and comfortable accommodation for all the girls & boys with facilities round the clock like security, entertainment, boarding & water Supply. Well balanced nutritious diet is provided to the students along with RO purified drinking water.

RELATIONS BETWEEN YOUNG MEN AND WOMEN:

METAS Adventist College & School of Nursing believe in wholesome & decent association between the opposite sexes. The conduct of a student toward the opposite sex must be above reproach and in conformity with the best traditions of the society. Clandestine meeting with the opposite sex is a serious offence & makes the student liable for dismissal.

Young men are expected to treat lady students with respect and courtesy. Any attempt to malign the name of a girl, to humiliate, or ridicule or to harass her in any way, will invite serious disciplinary measures. Similarly, lady students are expected to behave with decorum and dignity. They should be attired gracefully and modest and at no time should their behavior and conduct invite uncalled for attention.

TRANSPORTATION:

The College has its own buses to transport students to various clinical facilities.

MEDIUM OF INSTRUCTION & EXAMINATION:

English is the medium of instruction & students write the exams in English only for all courses except ANM for which the medium of instruction is Hindi.

FEE:

- Fees must be regularly paid by all the students.
- Fees once paid will not be refunded under any circumstances.
- Candidates have to bear the expenses of uniforms, Books, student's nurses association fund, examination fees, Posting Charges etc. in Addition to the regular Fees.
- Students will be liable to pay the balance fee for the whole course even if they leave in the middle of the session

VACATION & HOLIDAYS:

6 weeks of vacation per annum for B. Sc.(N) and for GNM, ANM & P.B.B.Sc in 4 Weeks

Sick leave 10 days per annum, leave will be granted with a medical certificate only Students who are absent from class/ Clinicals without Permission will have to compensate by performing 8 hour duty shift for every day of unexcused absence.



METAS ADVENTIST COLLEGE

Affiliated to Ranchi University/MIBE-CMAI & Recognised by Indian Nursing Council/JNRC



COLLEGE RULES FOR THE STUDENTS:

All the students are required to comply with the College rules & regulations.

- ↪ Regular & punctual attendance should be maintained in all class activities like Lectures demonstrations, practical, clinical teachings, tutorials tests etc. as well as in the college activities like conferences guest Lectures etc.
- ↪ As per the Indian Nursing Council, New Delhi regulations no students shall be allowed to appear for the annual examination of the concerned subject if his/her attendance falls short of 80% of the total working days. Theory teaching in the subjects, similarly in practical's, hospital posting etc, attendance should not be short of 80% Internal.
- ↪ Attendance at the college examinations is a must & marks obtained in these will be taken into account in making internal assessment.
- ↪ Leave of absence must be taken from the concerned authorities. Improper leaves will result in compensation.
- ↪ Illness & minor ailments should be reported to the warden or Hostel Monitors immediately.
- ↪ Clinical uniform should be worn for all clinical postings.
- ↪ Library & Laboratory hours are compulsory.
- ↪ Students must pay for all the damages caused by them to books and other colleges hospital property.
- ↪ Use of mobile phones is strictly prohibited.
- ↪ Strict discipline should be maintained and students should obey the orders of faculty and management at all times.
- ↪ Ragging is illegal and crime. Ragging in any favour is illegal and punishable.

DISCIPLINARY ACTION:

- ↪ All irregularities, neglect of duties, breach of rules and indiscipline are to be brought to the notice of the Principal, Who In consultation with the management, senior staff members & administrative staff shall deal with any serious offence, for which the Student may be Liable for a fine, suspension, and/removal/expulsion from the college.
- ↪ The decision of the governing body will be final and binding on the students.



METAS ADVENTIST COLLEGE

Affiliated to Ranchi University/MIBE-CMAI & Recognised by Indian Nursing Council/JNRC

HOSTEL RULES:

- ⇒ Every student should reside in the hostel & shall be responsible for faithfully following the rules.
- ⇒ Study time has to be observed daily during which the students are not allowed to be in the hostel rooms.
- ⇒ Students should not change the seat/location allotted to them under any circumstance.
- ⇒ No students will stay in the hostel during college or clinical training hours without the prior permission of the class coordinator and Principal or Hostel Dean.
- ⇒ Every Student should obtain an out pass from the Hostel Dean before leaving the campus and upon return the same should be informed.
- ⇒ Hostel attendants or mess attendants should not be used to get any sort of personal work done.
- ⇒ Hostellers are not allowed to keep valuables, cash or gold jewellery in the hostel. Authorities will not be responsible for any loss.
- ⇒ Alcoholic drinks, drugs, gutkha or pan chewing are strictly prohibited and if a student is noticed with any of the above shall be asked to withdraw from the college
- ⇒ Students are not allowed to conduct meetings/ demonstrations in the hostel or college Campus. In case any student is found guilty she will be expelled from college and hostel.
- ⇒ The students should be dressed in an appropriate way.
- ⇒ Ragging is not tolerated and is punishable.

SICK STUDENTS:

- ❖ Students should inform the warden about the need of any special diet in advance.
- ❖ Sick leave should be obtained from the / Hostel Dean without which the Student will not be allowed to stay in the Hostel.
- ❖ Sick students should stay only in the sick room & not in the hostel.
- ❖ Treatment will be provided by the parent Hospital and the Student will have to pay the bills in cash.





METAS ADVENTIST COLLEGE

Affiliated to Ranchi University/MIBE-CMAI & Recognised by Indian Nursing Council/JNRC

CAFETERIA:

- ◆ Common mess is provided for all the hostelers.
- ◆ Mess is compulsory for all the hostelers.
- ◆ Meal Cards must be purchased in cash every month.
- ◆ Cooking is not allowed in the hostel rooms.
- ◆ All the meals should be taken in the dining room at proper timing.
- ◆ Food will be served from the serving window; no one will be allowed to enter the kitchen.
- ◆ Wastage of food, water & electricity Should be avoided at all times.
- ◆ No outside food will be allowed in the Hostels.



VISITORS & PHONE CALLS:

- ❖ Guests whose names are given in the application form and authorized by the parents are only permitted to visit the ward on every first Sunday of the month between 1:00pm to 5:00pm.
- ❖ Guests are not allowed to enter the hostel campus and no accommodation will be provided in the campus, they shall meet the student only in the assigned place.
- ❖ Those whose names are authorized by the parents can call the students only on Sunday from 10:00 pm to 5:00 pm.
- ❖ Students will be allowed to make outgoing calls at fixed times to their parents only.
- ❖ If any urgent information is to be conveyed other than Sundays the parents are request to contact the principal to pass on the message to the students.

OUTING:

- ❖ Will be allowed with parents only, on the first Sunday of every month from 1:00 pm to 5:00 pm.
- ❖ Students are not allowed to leave the hostel campus or class rooms without permission of the Dean, Principal or class coordinator. All such students should obtain an out pass from the Hostels Dean. In such a case they are expected to return to the campus by 5:00 pm.



METAS ADVENTIST COLLEGE

Affiliated to Ranchi University/MIBE-CMAI & Recognised by Indian Nursing Council/JNRC

A Word About **Ranchi University**

- ◆ Ranchi University turned fifty on July 2010. It was established in July 12, 1960.
- ◆ Ranchi University has 23 post graduate departments, 15 constituent colleges, 14 affiliated colleges.
- ◆ Ranchi University's post graduate departments and colleges are more than a dozen minor research projects.
- ◆ In keeping with the UGC's concept
- ◆ Ranchi University has introduced several vocational subjects.
- ◆ At present there are more than a dozen major research projects (besides several minor research subjects in almost 11 faculties).
- ◆ Ranchi University has fully functional Units of NSS and NCC in its colleges.
- ◆ To prepare students for jobs and NET/SET examinations, the university is running coaching classes for ST/SC/ minorities. Remedial classes are also held for ST/SC/ minorities.
- ◆ Ranchi University gives free sponsorship to BPL students every year.

WITHDRAWING:

- ❖ If any student discontinues studies on his/her own is removed/dismissed by the college authorities for any reasons or becomes ineligible to continue the course the fees (Tuition and other fees) paid will not be refunded under any circumstance and all the dues should be cleared in order to obtain original certificates.

ANTI RAGGING:

- ❖ Ragging any body and in any form is illegal and completely forbidden. It is punishable with fine, rectification and even expulsion from the college and also with prosecution. In case of any dispute the decision of the Management will be final and binding

GRADUATION:

- ❖ In order to encourage & felicitate the outgoing students, graduation exercises are introduced. All students of the outgoing class are expected to participate contribute to this programme.
- ❖ Graduating Class trip is compulsory for all the Students whose Expenses are borne by the students only. Prescribed Fees for the ceremony must be paid on time, to ensure its success.

EXAMINATIONS:

- ❖ Every student must appear for I/II term end & Preboard examination before appearing for Board or University examinations.
- ❖ Student absent or failed I/II term end examination must appear for backlog examination with a prescribed fee for each failed or absent subject.





METAS ADVENTIST COLLEGE

Affiliated to Ranchi University/MIBE-CMAI & Recognised by Indian Nursing Council/JNRC

Eligibility Criteria for all the Courses

Bachelor of Science in Nursing (B.Sc. Nursing)

(Affiliated to Ranchi University and recognized by the Indian Nursing Council, New Delhi & Jharkhand Nursing Council)

ELIGIBILITY:

1. Applicant should be at least 17 years old at the time of Admission.
2. 10+2 in the science stream with PCBE from any recognized board
3. Aggregate of 45%
4. Ability to communicate in English & Hindi
5. Both Girls & Boys can apply
6. Medium of Instruction:- English
7. Admission through Entrance test only.

DURATION. :- 4 Years (Regular)

General Nursing & Midwifery (GNM)

(Affiliated to the Mid India Board of Education of the Nurses League of the Christian Medical Association of India and recognized by the Indian Nursing Council, New Delhi & Jharkhand Nursing Council)

ELIGIBILITY:

1. Applicant should be at least 17 years old at the time of Admission.
2. 10+2 in ANY STREAM from any recognized board
1. Aggregate of 40%
2. Ability to communicate in English & Hindi
3. Both Girls & Boys can apply
5. Medium of Instruction :-English
7. Admission through Entrance test only.

DURATION :- 3 Years (Regular)

Auxiliary Nursing & Midwifery (ANM)

(Affiliated to the Mid India Board of Education of the Nurses League of the Christian Medical Association of India and recognized by the Indian Nursing Council, New Delhi & Jharkhand Nursing Council)

ELIGIBILITY:

1. Applicant should be at least 17 years old
2. Pass in 10+2 in ANY STREAM from any recognized board
4. Ability to communicate in Hindi
5. Only Girls can apply.
6. Medium of Instruction:-Hindi

DURATION. - 2 Years (Regular)

Post Basic Science In Nursing P.B.B.Sc. (N)

(Affiliated to Ranchi University and Recognized by the Indian Nursing Council, New Delhi & Jharkhand Nursing Council)

ELIGIBILITY:

1. A candidate seeking admission into Post Basic B.Sc. Nursing must complete GNM and be registered Nurse and midwife.
2. Aggregate of 45% in G.N.M.
3. Ability to communicate in English & Hindi
4. Both Girls & Boys can apply
5. Medium of Instruction :-English
6. Admission is for registered nurse only

DURATION:- 2 Years (Regular)





METAS ADVENTIST COLLEGE

Affiliated to Ranchi University/MIBE-CMAI & Recognised by Indian Nursing Council/JNRC

Bachelor of Science in Nursing (B.Sc Nursing)

COURSE OF STUDY

FIRST YEAR

Sl. No.	Subject	Theory (In hrs) (Class and lab)	Practical (In hrs) (Clinical)	(In hrs)
1	English	60		
2	Anatomy	60		
3	Physiology	60		
4	Nutrition	60		
5	Biochemistry	30		
6	Nursing foundation	265+200	450	
7	Psychology	60		
8	Microbiology	60		
9	Introduction to computers	45		
10	**Hindi/ Regional language	30		
11	Library work/ Self study			50
12	Co-curricular activities			50
	Total Hours	930	450	100
	Total Hours = 1480 hrs			

**Optional

SECOND YEAR

Sl. No.	Subject	Theory (In hrs) (class and lab)	Practical (In hrs) (clinical)	(In hrs)
1	Sociology	60		
2	Pharmacology	45		
3	Pathology	30		
4	Genetics	15		
5	Medical surgical Nursing (Adult Including Geriatrics) -1	210	720	
6	Community Health Nursing-I	90	135	
7	Communication & Educational Technology	60+30		
8	Library work/ Self study			50
9	Co-curricular activities			35
	Total Hours	540	855	85
	Total Hours - 1480 hrs			



METAS ADVENTIST COLLEGE

Affiliated to Ranchi University/MIBE-CMAI & Recognised by Indian Nursing Council/JNRC

THIRD YEAR

Sl. No.	Subject	Theory (In hrs) (Class and Lab)	Practical (In hrs) (Clinical)	(In hrs)
1	Medical surgical Nursing (Adult Including Geriatrics)- II	120	270	
2	Child Health Nursing	90	270	
3	Mental Health Nursing	90	270	
4	Midwifery & Obstetrical Nursing	90	180	
5	Library work/ Self study			50
6	Co-curricular activities			50
	Total Hours	390	990	100
	Total Hours = 1480 hrs			

FOURTH YEAR

Sl. No.	Subject	Theory (In hrs) (Class and Lab)	Practical (In hrs) (Clinical)	(In hrs)
1	Midwifery & Obstetrical Nursing		180	
2	Community Health Nursing-I	90	135	
3	Nursing Research & Statistics	45	*	
4	Management of Nursing service and education	60+30		
	Total Hours	225	315	
	Total Hours = 540 hrs			





METAS ADVENTIST COLLEGE

Affiliated to Ranchi University/MIBE-CMAI & Recognised by Indian Nursing Council/JNRC

Post Basic Science in Nursing (P.B.Sc)

COURSE OF STUDY

First Year

SI No.	Subject	Theory Hours	Practical Hours
1	Nursing foundation	45	-
2	Nutrition & Dietetics	30	15
3	Biochemistry & Biophysics	60	-
4	Psychology	60	15
5	Maternal Nursing	60	240
6	Child health Nursing	60	240
7	Microbiology	60	30
8	Medical & Surgical Nursing	90	270
9	English (Qualifying)	60	-
	TOTAL	525	810

Second Year

SI No.	Subject	Theory Hours	Practical Hours
10.	Sociology	60	-
11.	Community Health Nursing	60	240
12.	Mental Health Nursing	60	240
13.	Introduction to Nursing Education	60	75
14.	Introduction to Nursing Administration	60	180
15.	Introduction to Nursing Research & Statistics	45	120
	TOTAL	345	855

Note: Hindi/ Local language as per the need of the institution.





METAS ADVENTIST COLLEGE

Affiliated to Ranchi University/MIBE-CMAI & Recognised by Indian Nursing Council/JNRC

General Nursing & Midwifery (GNM)

COURSE OF STUDY

First Year

Subjects	Theory (hours)	Practical (hours)	
Bio Sciences	120		
- Anatomy & Physiology.	90		
- Microbiology	30		
Behavioral Sciences	120		
- Psychology	90		
- Sociology	30		
Nursing Foundations	210	200 (lab)	680 (clinic)
- Fundamentals of Nursing.	190	(22 weeks)	
- First aid	20		
Community Health Nursing	180	}	320 8 weeks
- CHN-I	80		
- Environmental Hygiene	30		
- Health Education & Communication Skills	40		
- Nutrition	30		
English	30		-
Computer Education	15		15
Co-curricular activities	10		-
TOTAL	625 (16 wks)	1215 (30 wks)	
		1840	

Second Year

Subjects	Theory (hours)	Practical (hours)
Medical Surgical Nursing-I	120	800 (20 wks)
Medical Surgical Nursing -II	120	
Mental Health Nursing	70	320 (8wks)
Child Health Nursing	70	320 (8wks)
Co-curricular activities	20	-
TOTAL	400 (10 weeks)	1440 (36 weeks)
		1840



METAS ADVENTIST COLLEGE

Affiliated to Ranchi University/MIBE-CMAI & Recognised by Indian Nursing Council/JNRC

Third Year Part - I

Subjects	Theory (hours)	Practical (hours)
Midwifery & Gynaecological	140	560 (14 wks)
Nursing		
Community Health Nursing-II	90	160 (4 wks)
Co-curricular	10	-
TOTAL	240 hours (6 weeks)	720 hours (18 weeks)
	960	

Third Year Part - II (Integrated supervised Internship)

Subjects	Theory (hours)
Nursing Education	20
Introduction to Research and statistics	30
Professional Trends & Adjustments.	30
Nursing Administration & Ward Management	40
TOTAL	120 (2 weeks)

Clinical Areas	Clinical Hours/ weeks *
Medical Surgical Nursing	288 (6 wks)
Community Health Nursing	288 (6 wks)
Child Health Nursing	96 (2 wks)
Midwifery and Gynaecological Nursing	384 (8 wks)
Mental Health Nursing	96 (2 wks)
TOTAL	1152 (24 weeks)

Clinical Areas	1 st Year	2 nd Year	3 rd Year -I	3 rd Year-II (Internship)
Nursing Foundation	880 (22)	-	-	-
Community Health Nursing	320 (8)	-	160 (4)	288 (6)
Medical Surgical Nursing	-	800 (20)	-	288 (6)
Mental Health Nursing	-	320 (8)	-	96 (2)
Child Health Nursing	-	320 (8)	-	96 (2)
Midwifery and Gynaecological Nursing	-	-	560 (14)	384 (8)
	1200	1440	720	1152
TOTAL	1200	1440	720	1152





METAS ADVENTIST COLLEGE

Affiliated to Ranchi University/MIBE-CMAI & Recognised by Indian Nursing Council/JNRC



Auxiliary Nursing & Midwifery (ANM)

COURSE OF STUDY

First Year

Sl. No.	Subject	Theory Hours			Clinical Hours		
		Theory	Demo	Total	Hospital	Comm	Total
1	Community Health Nursing	120	50	170	10	100	110
2	Health Promotion	120	75	195	20	180	200
	a. Nutrition	35	30	65			
	b. Human Body & Hygiene	35	20	55			
	c. Environmental Sanitation	20	15	35			
	d. Mental Health	30	10	40			
3	Primary Health Care Nursing - I	130	150	280	90	300	400
	a. Infection & Immunization	25	20	45			
	b. Communicable Diseases	40	25	65			
	c. Community Health Problems	30	50	80			
	d. Primary Medical Care	20	20	40			
	e. First Aid & Referral	25	35	60			
4	Child Health Nursing	75	110	185	80	100	180
Total Hours		450	385	835	200	680	880
Total = 1720 hours							

Second Year (First Six Months)

Sl. No.	Subject	Theory Hours			Clinical Hours		
		Theory	Demo	Total	Hospital	Comm	Total
1	Midwifery	200	160	360	220	160	380
2	Health Centre Management	40	40	80	-	60	60
Total Hours		240	200	440	220	220	440
Total = 880 hours							

Second Year (Last Six Months)

Sl.No.	Course title & description	Hospital	Community	Total
I	Midwifery	240	240	480
II	<ul style="list-style-type: none"> Antenatal ward Intranatal /Labour room Post natal ward Neonatal care unit 	40 120 40 40		
III	Child Health	80	160	240
IV	Community Health & Health Centre Management	160	160	160
Total hours				880
Grand Total = 1760 hrs				



METAS ADVENTIST COLLEGE

Affiliated to Ranchi University/MIBE-CMAI & Recognised by Indian Nursing Council/JNRC

Salient Features

- ★ Well experienced & qualified faculty
- ★ Well equipped laboratories with state of the art facilities
- ★ Adequate library with internet facility
- ★ Monthly tests / term end exams / practical and class test are conducted regularly to evaluate the individual abilities of the student
- ★ Special english classes for non-english medium students
- ★ Regular supervised study hours [for boarders].
- ★ Clinical training at our parent hospitals 6 affiliated hospitals.
- ★ Individual care and attention under the supervision of resident wardens
- ★ Transportation facility available.
- ★ Regular community nursing exposure.
- ★ 100% placement assistance.





METAS ADVENTIST COLLEGE

Affiliated to Ranchi University/MIBE-CMAI & Recognised by Indian Nursing Council/JNRC

Office Bearers & Faculty

S. No.	Name	Designation	Qualification	Specialization
1	Pr. C Murmu	Executive Vice President	M.A, B.Ed	
2	Mr. S.D.D. Naidu	General Vice President	M.A, M.Phil (PhD.)	
3	Mr. Bobby James	VPFA	MBA	Finance
4	Mr. Vijay Raj	Registrar	M.A, B.Ed	Communication & ET
5	Mrs. Merlin Mohan Boddeti	Principal C.O.N	M.Sc Nursing	Maternal Nursing
6	Mrs. Sunita Soren	Principal S.O.N	P. B. B.Sc Nursing	Child Health Nursing
7	Dr. Subhakar Prasad	Chaplain/Dir. Dept of Comm.	M.A, PhD.	English
8	Mrs. Ivy Edwards	Lecturer/Placement Incharge	MA	English
9	Mrs. Hirani Dahanga	Dean (Girls)	B.A.	
10	Mr. Ravi Dara	Dean (Boys)	P. B. B.Sc Nursing	
11	Mrs. Esther Murmu	Office Secretary	BLA	
12	Dr. Dharmendra Sharma	Professor	MD Statistics	Anatomy & Physiology
13	Dr. Somesh Tripathy	Professor	M.B.B.S.	Pathology
14	Dr. Dheeraj Barnwal	Professor	M.B.B.S.	Pharmacology
15	Dr. Lopa Mudra Satapathy	Professor	Ph.D. Statistics	Statistics
16	Ms. Shikha Sharivastawa	Professor	M.Sc. Microbiology	Microbiology & Genetics
17	Mr. Anjan Kumar	Assistant Professor	MBA, M.Sc	Biochemistry, Biophysics
18	Mr. Alok N Verma	Management	MBA	Management
19	Mr. Dilip Kumar	Computer	MCA	Computer Science
20	Mrs. Sonal Samuel	Associate Professor	M.Sc Nursing	Obstetric & Gynecological Nsg.
21	Ms. Angeline Racheal	Associate Professor	M.Sc Nursing	Medical Surgical Nursing
22	Mrs. Shubha Dahanga	Assistant Professor	M.Sc Nursing	Psychiatric Nursing
23	Ms. Olive Kujur	Assistant Professor	M.Sc Nursing	Obstetric & Gynecological Nsg.
24	MS. Sunita Ravi Dara	Assistant Professor	M.Sc Nursing	Mental Health Nursing
25	Mrs. Marine Gladina Soren	Assistant Professor	M.Sc Nursing	Obstetric & Gynecological Nsg.
26	Mr. Alphons Thomas Kujur	Assistant Professor	M.Sc Nursing	Pediatric Nursing
27	Mrs. Sunita Surin	Tutor	P. B. B.Sc Nursing	
28	Ms. Jinit S Bage	Tutor	P. B. B.Sc Nursing	
29	Ms. Prasanawati Dang	Tutor	B.Sc Nursing	
30	Ms. Alma Kujur	Tutor	B.Sc Nursing	
31	Mrs. Anu Priya Soren	Tutor	B.Sc Nursing	
32	Mrs. Sandhya	Tutor	B.Sc Nursing	
33	Ms. Anu Priya	Tutor/Clinical Instructor	B.Sc Nursing	
34	Ms. Sugandha Nagduar	Tutor/Clinical Instructor	B.Sc Nursing	



METAS ADVENTIST COLLEGE

Affiliated to Ranchi University/MIBE-CMAI & Recognised by Indian Nursing Council/JNRC

Time Table

COLLEGE TIMINGS

Morning Assembly (Regular)	-	8:00 am
Class timings (Mon - Thu)	-	8:20 am - 4:10 pm
Class timings (Friday)	-	8:20 am - 3:20 pm
Class timings (Sunday)	-	8:20 am - 12:00 noon
SNA/Dept. club meetings (Sunday)	-	12:00 - 1:00 pm

HOSTEL TIMINGS

Wake up call	-	5:00 am
Morning Assembly (Hostel's Room)	-	6:00 am
Class & Clinical hours	-	8:20 - 4:10 pm
Games & leisure	-	4:10 - 6:00 pm
Evening Assembly	-	6:00 - 6:30 pm
Study time	-	7:30 - 9:30 pm
Lights off (Good Night)	-	10:00 pm - 5:00 am
Social Nites (Every Saturday)	-	7:30 pm - 9:30 pm

CAFETERIA TIMINGS

Breakfast	-	6:30 - 7:30 am
Lunch	-	12:40 - 1:40 pm
Dinner	-	6:30 - 7:30 pm

OTHER TIMINGS

Parents meet (First Sunday)	-	1:00 - 5:00 pm
Campus cleaning (Last Sunday)	-	09:00 - 12:00 Noon

Note : Timings are subject to change as per the seasons





METAS ADVENTIST COLLEGE

Affiliated to Ranchi University/MIBE-CMAI & Recognised by Indian Nursing Council/JNRC



Graduation



School Medical Camp



Class Room Activity



Student Assembly



World Aids Day



Orientation and Welcome Programme



Blood Donation



College Excursion



METAS ADVENTIST COLLEGE

Affiliated to Ranchi University/MIBE-CMAI & Recognised by Indian Nursing Council/JNRC



Cultural Activity



SNA Fund Raising



Globe Youth Day



Annual Sports



Lamp Lighting Ceremony



Adventist Youth Outing



Campus Cleaning



Digital Class Room



METAS ADVENTIST COLLEGE

Affiliated to Ranchi University/MIBE-CMAI & Recognised by Indian Nursing Council/JNRC



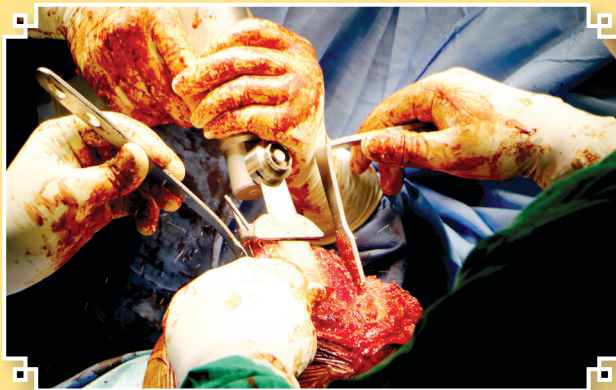
Graduation



Skill Development Lab



Business Office



Operation Theatre



Hospital I.C.U. Team



Globe Youth Day



GYD Fundraising Activity



METAS ADVENTIST COLLEGE

Affiliated to Ranchi University/MIBE-CMAI & Recognised by Indian Nursing Council/JNRC

ADMISSION PROCEDURES

- Prospectus and application forms can be collected from the college business office or downloaded from the website.
- All The Filled in Application Forms Must Be Submitted/Sent to The Registrar Only
- All the Applicants are expected to appear for the entrance examination for the session.
- Qualified candidates are selected and informed through SMS & Phone Calls or through e-mail for counseling and registration.
- Applicants are expected to show good moral character and to comply with the aims and philosophy of an Adventist College.
- The College reserves the right to change the fees structure, dates, timings and any other provision or requirement at anytime, without prior notice.
- **Metas Adventist College & School of Nursing (A Minority Institution) offers its programs in affiliation with Ranchi University & Mid India Board of Education (MIBE-CMAI) & Recognised by INC/ JNC & Govt of Jharkhand**
- Photo copies of Mark Sheets-X & XII, Admit card X & XII, Transfer Certificate or CLC, Migration Certificate, Conduct /Character Certificate & Pass & Provision Certificate (4 Sets each & 10 stamp size photographs & 16 Passport Size Photographs) must be submitted to the Registrar while submitting the application. Original copies to be submitted at the time of counseling & registration.
- **All the Fee Payments by demand draft must be drawn on the following college accounts. (B.Sc. Nursing, Post B.Sc. Nursing, & ANM) in favour of Metas Adventist College, (GNM) must paid in favour of S.D.A. School of Nursing all payable at Ranchi.**
- Parents shall accompany their wards at the time of admission in the college, if parents are unable to attend, with their consent letter the nearest relative as a guardian should accompany their ward & sign all the papers.
- **ST & SC Candidate can apply for the Government Stipend on Submitting the following documents.**
(i) Caste Certificate (ii) Income Certificate (iii) Residential proof Certificate (iv) UID Card (Aadhar card) (V) Bank Account No. linked with Aadhar card.

ALL THE FILLED - IN APPLICATION FORMS MUST BE SUBMITTED / SENT TO THE REGISTRAR ONLY





METAS ADVENTIST COLLEGE

SDA Mission Hospital Campus, Bariatu Road, Ranchi - 834009, Jharkhand

Tel.: +91-09570208845, 08757672841, Helpline: +91-08603809018, 72558889261

E-mail: registrar166_metasranchi@rediffmail.com | Visit us : www.metasofsdaranchi.org |  : METASRanchi